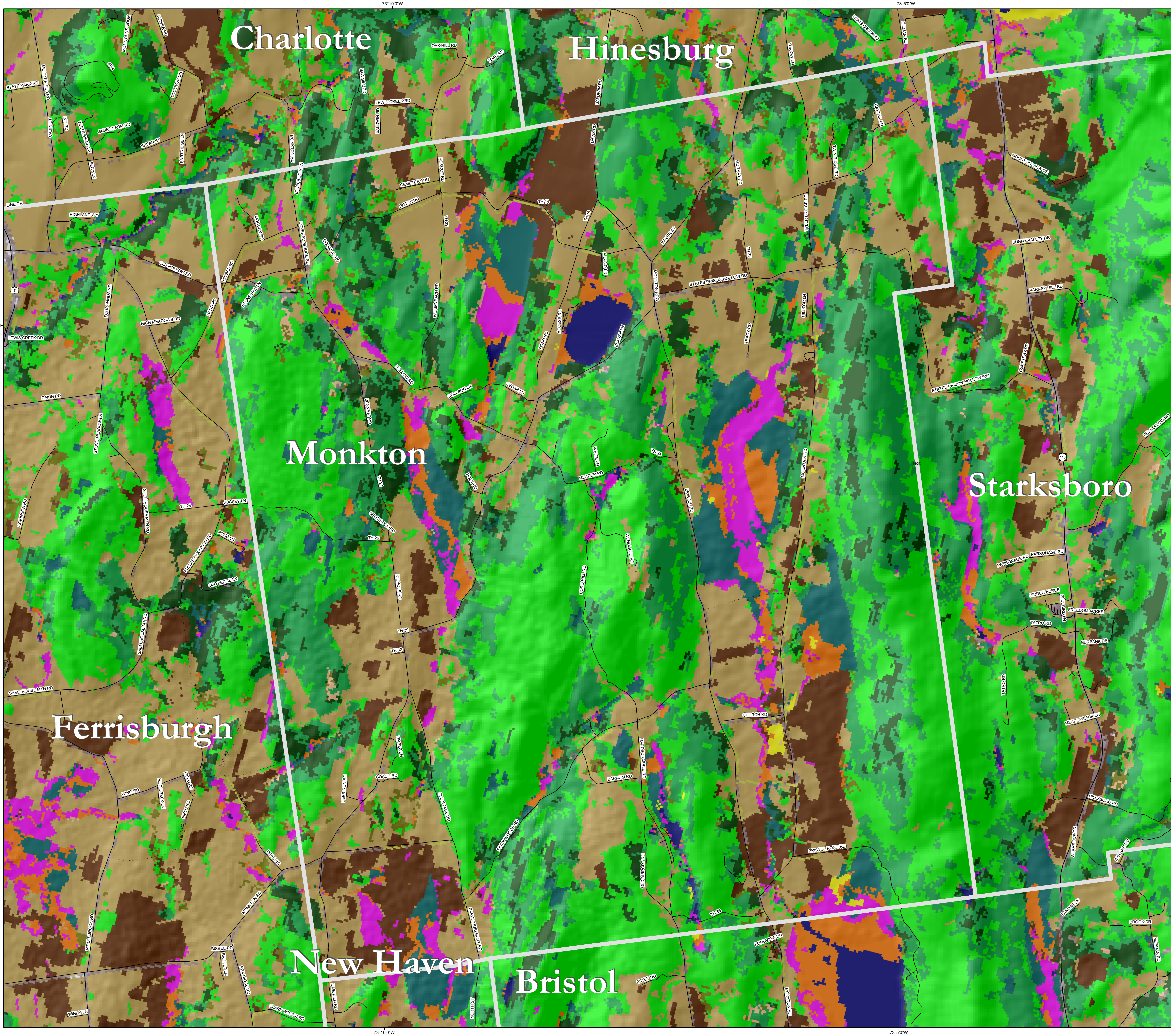


MAP 2: LAND COVER

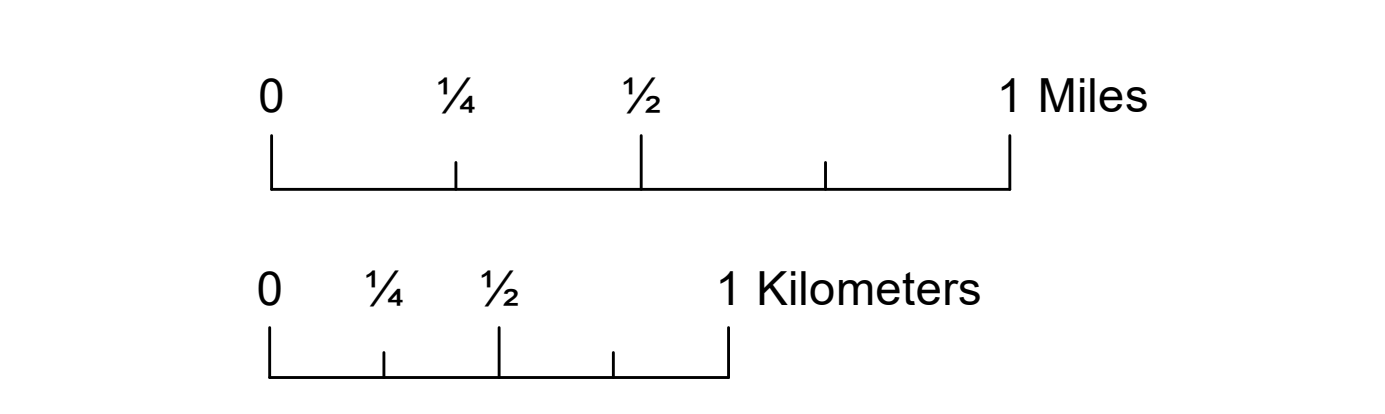
MONKTON



LEGEND

- Town Boundary
- Roads**
 - Interstate
 - Primary
 - Secondary
 - Trail
- Landcover**
 - Developed, High Intensity
 - Developed, Medium Intensity
 - Developed, Low Intensity
 - Developed, Open Space
 - Cultivated Crops
 - Pasture/Hay
 - Grassland/Herbaceous
 - Deciduous Forest
 - Evergreen Forest
 - Mixed Forest
 - Scrub/Shrub
 - Palustrine Forested Wetland
 - Palustrine Scrub/Shrub Wetland
 - Palustrine Emergent Wetland
 - Bare Land
 - Open Water

Data Source:
 Vermont Center for Geographic Information
 Vermont State Plane Projection
 NAD1983 Datum
 Map by Monica Przyperhart
 January, 2019



Land cover records the landscape as surface components: forest, water, wetlands, urban areas, etc. The National Oceanic and Atmospheric Administration's (NOAA's) Coastal Change Analysis Program (C-CAP) produces a nationally standardized database of land cover and land change information for coastal regions and adjacent uplands— including Vermont. These are the data displayed here, from the 2011 database.

This map is useful at a broad scale for seeing patterns of natural land cover and land use. At a statewide scale, it is beneficial for picking out large urban areas, agricultural areas, wetland complexes, and forested areas. More locally, these data can be used to locate forested blocks, predict where wildlife with wide home ranges may be able to travel through the landscape, and see where patterns of development may hinder wildlife movement. They can also be used to distinguish hardwood forests from softwood and mixed forests, which can be helpful in predicting locations of natural communities and wildlife species.

Land cover information isn't intended to capture individual processes or species; it tells, very simply, what covers the ground at the present time.