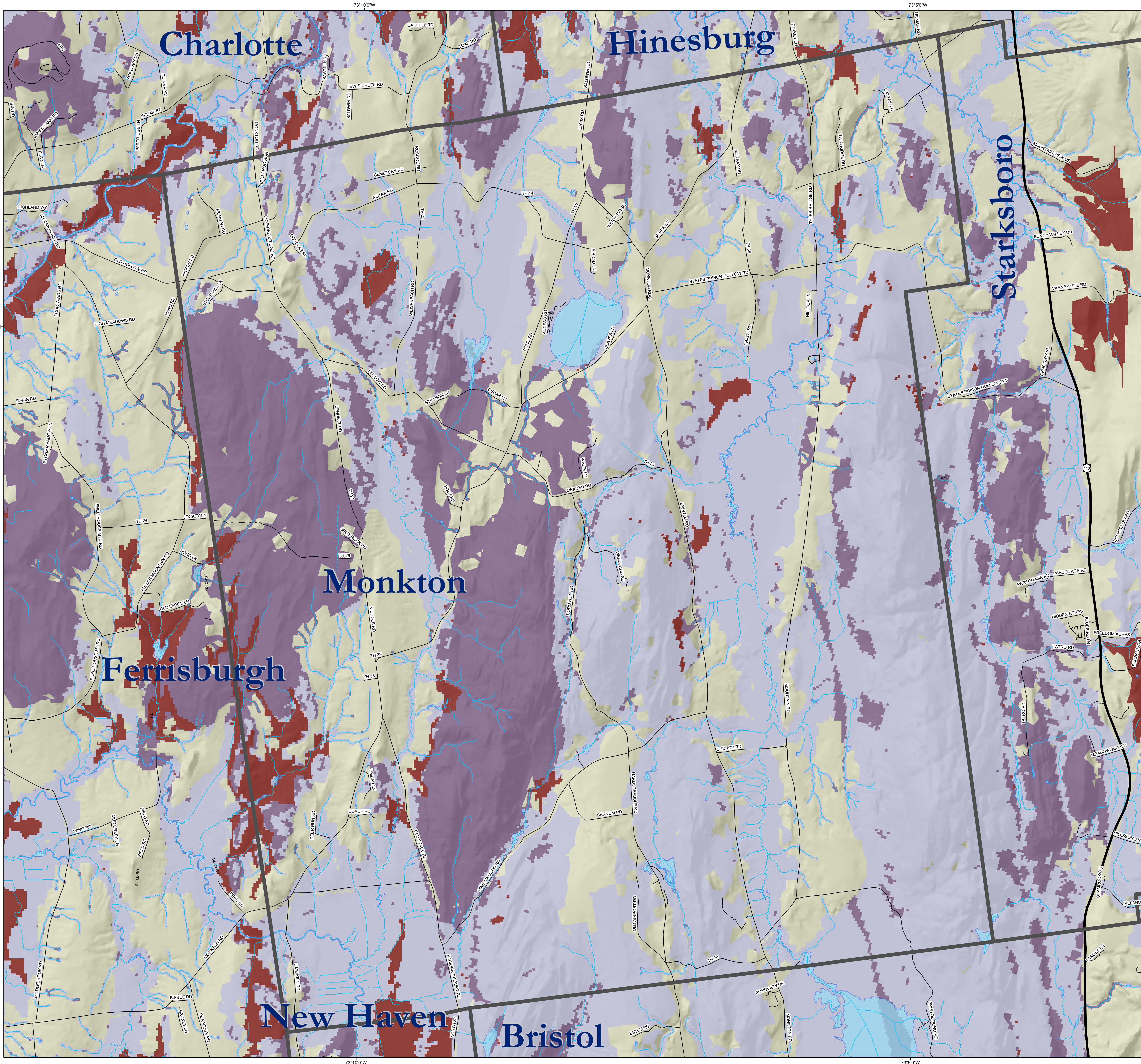


MAP 4: PHYSICAL FEATURES

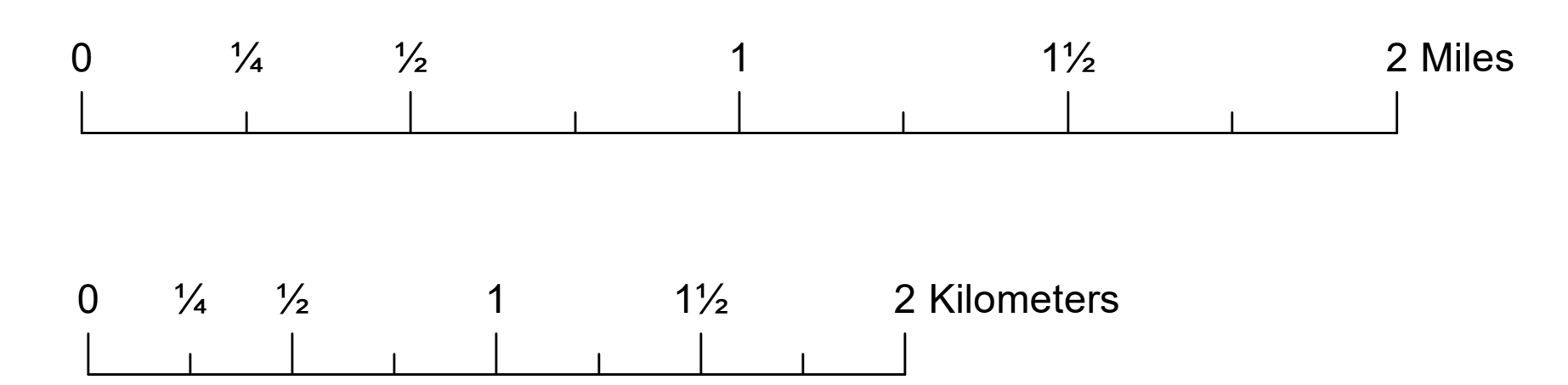
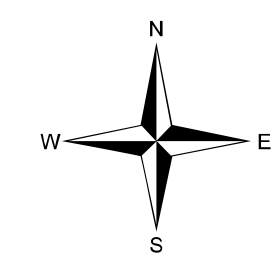
MONKTON, VERMONT



LEGEND

- Town Boundary
- Roads**
 - Primary
 - Secondary
- Rivers & Streams
- Lakes & Ponds
- Rare Physical Landscapes
- Representative Physical Landscapes
- Responsibility Physical Landscapes

Data Source:
 Vermont Center for Geographic Information
 Vermont State Plane Projection
 NAD1983 Datum
 Map by Monica Przyperhart
 March, 2018



Physical landscapes—also referred to as enduring features—are the parts of the landscape that resist change. They are the hills and valleys, the underlying bedrock, and the deposits left behind by glaciers or ancient lakes. They remain largely static when natural or human-induced changes in land cover and wildlife occur, as plants and animals expand or contract their ranges, and even as the climate changes.

Because of the strong influence of the physical landscape on which plants, animals, and natural communities appear and thrive, physical features can help us in understanding biological diversity and in predicting habitat conditions and species presence. Physically diverse landscapes support diverse natural communities and species, and so one way to ensure that biological diversity persists on our landscape is to conserve a variety of physical landscapes.

This map provides some context for your town's physical landscape. While the map is zoomed to a town scale, the physical features depicted are important regionally. There are three types of physical landscape shown: "representative," "rare," and "responsibility." All are important for supporting a diverse set of natural communities and species.

Rare Physical Landscapes are those types least commonly found in Vermont, each covering less than 4.5% of the state's land area. While not uncommon within Vermont, **Responsibility Physical Landscapes** are rarely encountered in the greater landscape, with the occurrences in Vermont representing some of the few locations regionally—or even worldwide—with each combination of physical features. For each physical landscape type not included on the "rare" or "responsibility" lists, high-quality examples were selected throughout the state based on condition and patch size. These are mapped as **Representative Physical Landscapes**.

Physical landscapes are very useful at a statewide or multi-state scale where a high degree of accuracy is unnecessary. When viewing physical landscapes within a single town, they should be interpreted with caution. At this scale, the boundaries between two landscape types cannot be considered highly geographically accurate. However, the physical landscapes map can be used as an initial bird's eye view to help you think about the local landscape in a new way.