

GREEN MOUNTAIN ENGINEERING, INC.

1438 South Brownell Road

P.O. Box 159

Williston, VT 05495

(802) 862-5590

Town of Monkton, VT - VGS Oversight GME Project No. 26-012

Field Report

August 24, 2016

LOCATION(s): Old Stage Road; Parks-Hurlburt Road Access; Monkton Road; Post Road Access; Hollow Road Access; Rotax Road Access

ONSITE:

Parks-Hurlburt Access:	Rotax Road Crossing:	Old Stage Road:
Jamie L. Simpson, GME	Jamie L. Simpson, GME	Jamie L. Simpson, GME
(3) Excavators w/oper.	(1) Laborer (Michels)	(1) Concrete Laborer (SD Ireland)
(4) Michels Pickup Trucks	(1) Flatbed Truck w/driver	(2) Excavators w/Oper.
(4) Laborers		(1) Foreman (Michels)
		(2) Laborers

WEATHER:

86 °F, Sunny, Hot

GME HOURS ON SITE:

4:00pm – 5:00pm

WORK OBSERVED:

No activities were observed on-site at the Post Road Access, Monkton Road crossing site, Hollow Road Access or Rotax Road Access.

Parks-Hurlburt Access:

- Excavators and laborers were trenching and lowering pipe from approximate Sta. 1613+00 to 1615+00.

Rotax Road Crossing:

- There was no excavation or pipeline installation activity on-site when GME arrived at approximately 4:15pm. A Michels flatbed truck was hooking up to a trailer to haul away some construction debris and miscellaneous equipment.
- It was apparent that there was some recent activity through a stream crossing at approximate Station 1288+20 as the soils on the stream bank have been newly stabilized with straw matting and large boulders within the stream channel were observed to have traces of mud on them. While standing on the timber mat bridge GME observed that the upstream water quality appeared clear and in an undisturbed state. When observing

downstream from the mat bridge, the water quality appeared to be slightly less clear, with specific locations near the large boulders having a cloudy appearance.

- GME explored a different location downstream to observe the water quality and found that the clarity was improved, although some cloudiness was still present.

Old Stage Road:

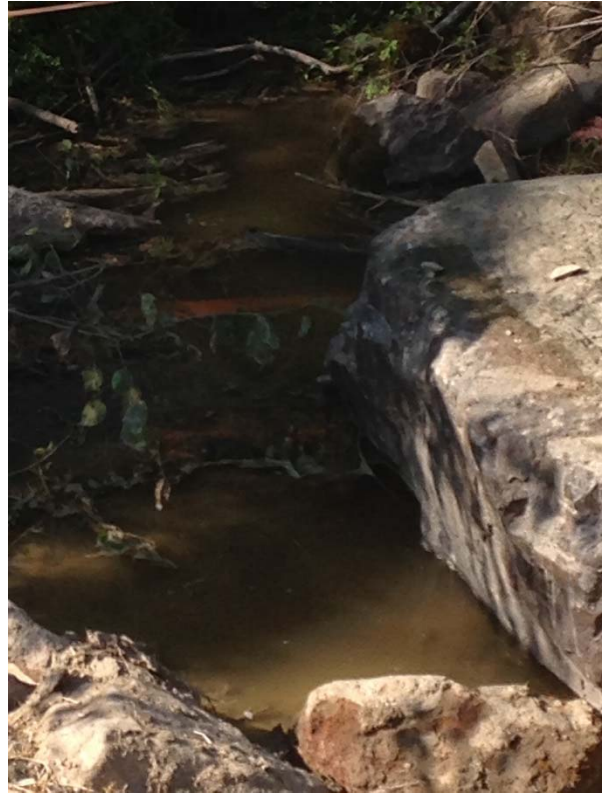
- GME observed two (2) excavators at the Old Stage Road crossing near approximate Station 1565+50 to 1666+00. One excavator was backfilling around an earth dam created to contain a concrete encasement of pipeline beneath Old Stage Road. The other excavator was lifting pipe to assist with jacking and place pipe in a position for welding. A Michels representative on-site stated that things were going a bit slow, but no complications.

OTHER: No other interactions.

ONSITE OBSERVATION PHOTOS:



Looking north (downstream) from a timber mat bridge at approximate Sta. 1288+20



Looking south (upstream) from approximate Sta. 1288+20.



Looking south from a footbridge located downstream from the timber mat bridge at Sta. 1288+20.



Looking west at Old Stage Road from approx. Sta. 1566+00



Looking north from Post Road Access at approx. Sta. 1424+25



Looking south from Post Road Access at approx. Sta. 1424+25